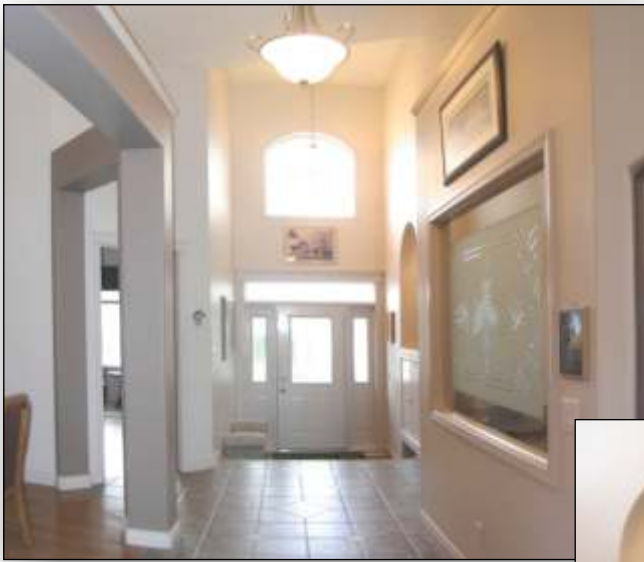


*Welcome to
430 Mount Douglas Place SE*



*Courtesy of:
Howie Attfield
Royal LePage
288-1554*





Elegant front entrance

Welcome to this breathtaking hillside walkout bungalow. With over 3800 square feet of elegant living space, spacious high ceilings and quality finishing throughout, residing in this bright and spacious home is truly a pleasure.

Gourmet Kitchen:

Relish the pleasures of working in this fully equipped kitchen. Enjoy the following features

- Tons of beautiful maple cabinets for plenty of storage with organizer pullout drawers
- All durable solid granite countertops
- Double sided stainless steel sink with handy veggie sprayer, garborator, and instant hot water tap. All kitchen faucets filtered water.
- Roomy center island with plug in

- and more cupboard for extra storage.
- Spacious matching telephone centre with maple and granite finishing
- Double wide oversized 25 cubic ft. fridge in contemporary matching black
- Built in matching black Whirlpool wall oven and Panasonic microwave
- Easy clean ceramic stove top with quick halogen heat
- Full walk-in pantry with auto light and dustless shelves
- Skylights and contemporary pewter lights over sink
- Whisper quiet Bosch dishwasher



- Neutral easy clean ceramic backsplash and flooring
- Huge breakfast nook with bar stool area and tons of room for any sized table.
- Convenient walkout to deck with BBQ gas hookup

Great Room:

Spacious and elegant with soaring cathedral ceilings, and floor to ceiling windows this room boasts:



Spacious Gourmet Kitchen



Warm and Inviting Great Room

- Inviting large easy light gas fireplace tastefully finished with maple mantle, ceramic surround and designer inset
- Built in matching maple book shelves
- Stylish ceiling fan for good air circulation



Private Dining Room

Dining Room:

Private and semi formal with large side panel windows for good natural light. Gleaming solid oak floors and contemporary pewter chandelier.

Master & Ensuite:

Spacious and restful this room features large windows and walk in closet with dustless closet organizers. Contemporary ensuite with double sinks, easy care cultured marble counters, maple



2nd Bedroom/Den

cabinets and pewter trim. Large Jacuzzi tub with handy extendible shower sprayer attachment and easy care ceramic surround. Privacy toilet area and large walk in shower.

2nd Bedroom:

Open 2nd bedroom with bright bay, warm hardwood flooring and large closet. Wired for cable making this room perfect for a second den.

Den:

Beautiful glass panel feature wall for added light with privacy glass French door entry. Hardwood flooring, cable outlets and telephone jacks.

Guest Bath:

Full four piece bath discreetly located near back entrance. Maple cabinets, easy care ceramic tile floors and stylish pewter trim.



Master Bedroom & Ensuite





Family Room

Lower Level:

Family Room:

Roomy and bright with full above grade windows and access to back yard. Tastefully finished in neutral tones and warmed by an easy light oversized gas fireplace beautifully trimmed with easy care ceramic tile surround. Handy built in entertainment centre.

Rec Room:

Plenty of space for pool table, games and entertaining.

Bedroom 3 & 4:

Bright and roomy with large above grade windows and full sized walk in closets with dustless closet organizers. Great rooms for guests or teenagers.



Professionally Finished Walkout Basement



Spacious 4th & 5th Bedrooms

Bath:

Roomy 3 piece with maple vanity, cultured marble counters, pewter trim and neutral decor.

Extras:

- Double water heaters for tons of hot water
- Double furnaces and controls for maximum flexibility and temperature control
- All RGO top of the line blinds and drapes
- All flex rooms wired for cable hookup
- Instant hot water tap in kitchen
- Contemporary pewter light fixtures throughout and dimmer switches in all main living areas
- Underground sprinkler system
- Long lasting duradeck coating on deck with gas and power hookups
- Large double attached garage, fully insulated, drywalled and heated with garage open and 2 controls
- Low maintenance stucco and stone exterior

